

A PARADIGM SHIFT IN SATELLITE TERMINALS FOR RUGGED MOBILITY



SLIMMER, FASTER, & STRONGER—DESIGNED FOR THE FUTURE OF COMMUNICATIONS

EXPERIENCE THE ALL NEW KESTREL™ u5. INQUIRE NOW!
DEVELOPER KITS AVAILABLE FALL 2025

MORE FLEXIBLE ARCHITECTURE

Core terminal minimized for increased integration optionality

NO MOVING PARTS

Passive cooling

FASTEST WATER SHEDDING POSSIBLE

IP69K INGRESS RATING

SINGLE CABLE INSTALL

VERY LOW POWER

Total system power
<100 W typical 200 W max

TURNKEY PRODUCT BUNDLES

INDUSTRY LEADING QUALITY

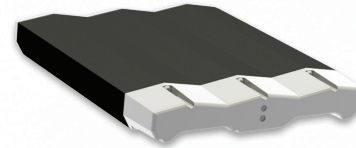
10+ years of cutting-edge FPA development

Engineered and tested for maximum durability

Field proven reliability:
Highest MTBF in market

SPECIFICATIONS

Receive (RX) Band	10.7 GHz to 12.75 GHz
RX Performance (G/T)	9.2 dB/K (broadside)
Transmit (TX) Band	13.75 GHz to 14.50 GHz
TX Performance (EIRP)	LEO 40.3 dBW
Dimensions	L 60 cm x W 60 cm x H 8 cm L 23.6 in. x W 23.6 in. x H 3.1 in.
Weight	<11 kg / <24 lb.
Operational Temperature	-40 °C to +70 °C
Survival Temperature	-40 °C to +85 °C



u5 Router



EUTELSAT ONEWEB
Global LEO,
enterprise grade low
latency broadband
connectivity



**FASTER BEAM
SWITCHING**
Sub-1 msec.
repointing,
tuning, and pol



RUGGED
Ready for land and
sea mobility, best in
class durability



MOBILITY FIRST
Kymeta has over a
decade of prioritized
focus on mobility



**WAVEFORM
AGNOSTIC**
Compatible with
future and legacy
waveforms



**SMALLER
& LIGHTER**
70% smaller, 68%
lighter than
Kymeta u8



FULL APERTURE
Maximum
antenna area with
interlaced RX and
TX apertures



**FULL DUPLEX &
POLIZATION AGILE**
Higher throughput,
lower jitter,
future proof



**FUTURE-READY
& EXPANDABLE**
Field upgradeable
and serviceable

