

## Kymeta Revolutionizes Satellite Communications Through Intelligent Communications Platforms (ICPS)

Founded in 2012 and headquartered in Redmond, Washington, Kymeta leverages cutting-edge metamaterial-based science to engineer, manufacture and deliver resilient connectivity and enhanced situational awareness for critical, mobile applications. Backed by U.S. and international patents, our electronically steered flat-panel antennas enable seamless communications on the move. With software-defined solutions, hybrid multi-network capabilities, and edge processing, we integrate satellite and cellular networks, ensuring continuous connectivity in challenging environments. Kymeta solutions serve government, military, maritime, transport, and public safety clients worldwide, providing uninterrupted connectivity and spatial intelligence anywhere, anytime. With over 150 patents, Kymeta is shaping the future of global communications, dedicated to delivering reliable, efficient, and intelligent connectivity solutions for an increasingly mobile and connected world.

**FOUNDED IN:** 2012

**HEADQUARTERS:** Redmond, Washington

**CEO:** Manny Mora

**COMPANY TYPE:** Private

**INDUSTRIES SERVED:**

**GOVERNMENT & MILITARY:** Defense, Security Agencies, Law Enforcement, Maritime Defense

**LAND MOBILITY:** VVIP & Service Vehicles, Intercity Buses & Coaches, Passenger and Freight Rail

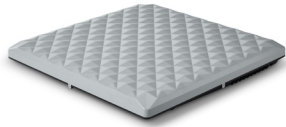
**MARITIME:** Commercial Fishing, Commercial Shipping, Super Yachts

**PUBLIC SAFETY:** Emergency Services, NGOs, Wildfire Fighting

**KYMETA™**

[www.kymetacorp.com](http://www.kymetacorp.com)

## Products



### Kestrel™ u5 – National Security – Land/Maritime

Low-profile designed to maximize integration flexibility across platforms. Its single-cable configuration simplifies installation, while an expandable router enables scalable connectivity as requirements evolve. Built for demanding environments, the system features an IP68 ingress rating and no moving parts for enhanced durability and reliability.



### Osprey™ u8 – National Security – Land/Maritime

The first-to-market hybrid GEO-LEO-LTE terminal provides a complete customized connectivity platform for the military community for communications on the move (COTM), networks on the move (NOTM), and communications on the pause (COTP) ensuring requirements for primary, alternate, contingency and emergency (PACE) plans. The terminal mounts easily on a wide array of military vehicles and vessels to provide reliable connectivity in remote and challenging locations.



### Goshawk™ u8 – National Security- Land/Maritime

Delivers resilient and flexible multi-orbit, multi-network satellite communications in a single terminal. Provides jamming mitigation for GNSS-denied operations, effortlessly integrates with existing networks, and features customizable colors and a low-profile design for discreet installation.



### Peregrine™ u8 (LEO) – Commercial Maritime

Delivers reliable connectivity at sea by seamlessly integrating with vessels' IT infrastructure. The sleek, easy-to-install terminal provides hassle-free connectivity, even in rough waters and unpredictable weather conditions.



### Hawk™ u8 – Commercial Land

Delivers robust, reliable, and turnkey mobile communications for land-based operations. The Hawk u8 is based on Kymeta's industry-leading, electronically steered antenna (ESA) and mounts easily on vehicles and vessels to provide seamless connectivity through geostationary (GEO) or low earth orbit (LEO) satellite connectivity.

## Key Differentiators

**MARKET LEADER** — In 2017, Kymeta launched the u7 terminal, the first commercially available metamaterial ESA. In 2023, the Hawk™ u8 LEO terminal became the first ESA for the Eutelsat OneWeb LEO network. In 2024, Kymeta introduced the Osprey™ u8 and Goshawk™ u8, the first multi-orbit, multi-network flat-panel ESAs for military users across the globe. In June of 2025, Kymeta demonstrated a simultaneous operation on the Ku and Ka band in a single aperture, and in March of 2026 Kymeta launched its third generation product, the Kestrel™ u5.

**UNIQUE TECHNOLOGY** — Kymeta's metamaterial-based software-defined solution ensures precise pointing and tracking even while on the move.

**OPEN NETWORK ARCHITECTURE** — Kymeta's platforms support LEO, GEO, and cellular networks and provide secure connectivity over sovereign channels.

**FUTURE-READY AND EXPANDABLE** — Kymeta's platforms support over-the-air updates, enhancing capabilities and enabling edge AI for emerging applications.

**DURABLE AND PROVEN** — With no moving parts, Kymeta's platforms offer high reliability and have been battle-tested.

## Socials

Instagram

[instagram.com/kymetacorp](https://www.instagram.com/kymetacorp)

LinkedIn

[linkedin.com/company/kymeta-corporation](https://www.linkedin.com/company/kymeta-corporation)

Vimeo

[vimeo.com/kymetacorp](https://vimeo.com/kymetacorp)

YouTube

[youtube.com/user/Kymeta](https://www.youtube.com/user/Kymeta)

Contact

[marketing@kymetacorp.com](mailto:marketing@kymetacorp.com)